



佛山锐耀源进出口有限公司
Foshan Ruiyaoyuan Import and Export Co.,Ltd

☎ Tel: +86 181 5170 6391

✉ Email: sales@ryyexp.com

🌐 Web: www.ryyexp.com

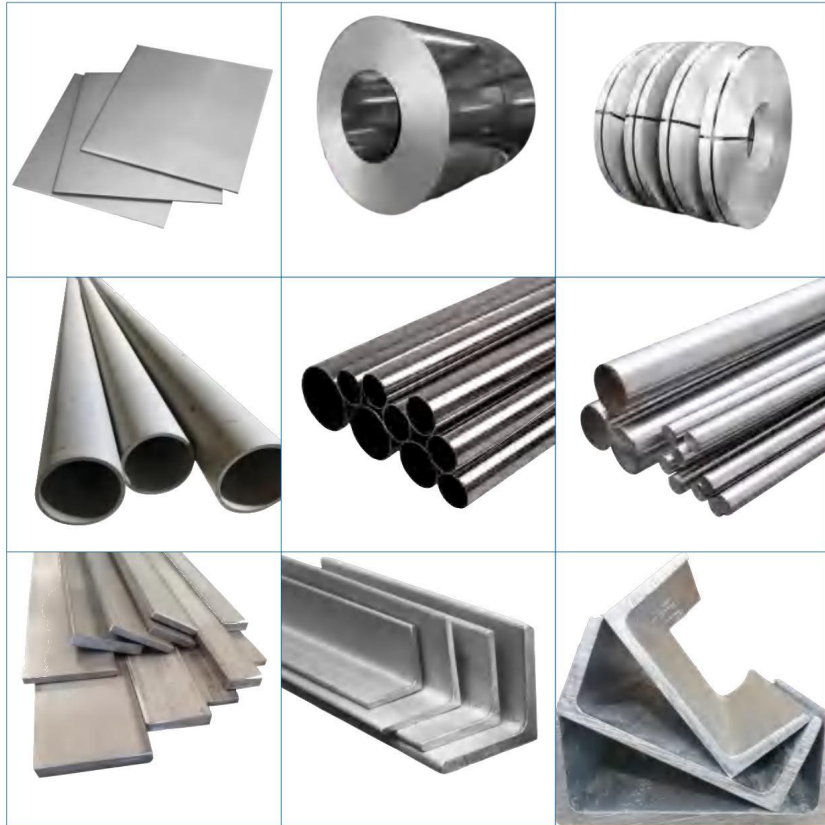
📍 No. 05, Nanliu Road, B2 District, Shunde District, Foshan City, Guangdong Province, China

佛山锐耀源进出口有限公司

Foshan Ruiyaoyuan Import and Export Co.,Ltd

Where Reliability Meets Steel: Your Premier Supplier

WHAT WE DO



Our mission is to provide high-quality metal materials while promoting sustainability and building lasting relationships with our customers and partners.

我们的使命是提供高质量的金属材料，同时促进可持续发展并与我们的客户和合作伙伴建立持久的关系。

CONTENT

目录

01	企业简介 Enterprise Profile	01
02	企业文化 Enterprise Culture	05
03	产品介绍 Product Introduction	07
04	生产加工车间 Working Shop & Process Center	13
05	库存中心 Inventory Center	14
06	包装, 装柜 Packing & Loading	15
07	国际不锈钢牌号对照表 International Stainless Steel Grade Comparison Table	16

企业简介

ENTERPRISE PROFILE

Foshan Ruiyaoyuan Import and Export Co., Ltd. is a professional company engaged in the export trade of steel products. Established in July 2010, the company is located in Foshan, Guangdong, China.

The company's main business is the export of high-quality steel products, including steel coils, sheets, plates, pipes, and other related products. Foshan Ruiyaoyuan Import and Export Co., Ltd. primarily exports to Southeast Asia, the Middle East, Africa, and South America. The company has a reputation for delivering high-quality products to its customers worldwide.

In addition to steel export trade, Foshan Ruiyaoyuan Import and Export Co., Ltd. provides comprehensive services such as warehousing, transportation, and customs clearance. The company is committed to providing customers with professional and efficient services, ensuring that their products are delivered on time and in good condition.

Foshan Ruiyaoyuan Import and Export Co., Ltd. has a team of experienced professionals who work closely with customers to understand their needs and provide customized solutions. The company's mission is to provide customers with the best products and services, while maintaining the highest standards of quality, integrity, and professionalism.

With years of experience in the steel export trade, Foshan Ruiyaoyuan Import and Export Co., Ltd. has established a strong reputation in the industry. The company is dedicated to building long-term relationships with its customers by providing them with excellent products and services, competitive prices, and timely delivery.

If you are looking for a reliable partner in the steel export trade, Foshan Ruiyaoyuan Import and Export Co., Ltd. is your best choice. The company's commitment to excellence and customer satisfaction is unmatched in the industry.

佛山市锐耀源进出口有限公司是一家专业从事钢材出口贸易的公司。公司成立于2010年7月，位于中国广东省佛山市。

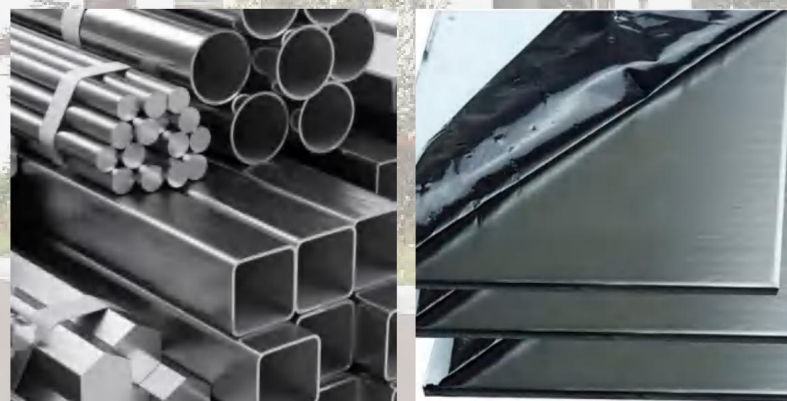
公司主营业务为优质钢材出口，包括钢卷、板、管等相关产品。佛山市锐耀源进出口有限公司主要出口东南亚、中东、非洲、南美洲。该公司可以向全球客户提供高质量产品而闻名。

佛山市锐耀源进出口有限公司除钢材出口贸易外，还提供仓储、运输、报关等综合服务。公司致力于为客户提供专业高效的服务，确保他们的产品按时、完好地交付。

佛山锐耀源进出口有限公司拥有一支经验丰富的专业团队，与客户密切合作，了解他们的需求并提供定制的解决方案。公司的使命是为客户提供最好的产品和服务，同时保持最高的质量、诚信和专业标准。

凭借多年的钢材出口贸易经验，佛山市锐耀源进出口有限公司在业内树立了良好的口碑。公司致力于通过为客户提供优质的产品和服务、有竞争力的价格和及时的交货，与客户建立长期的关系。

如果您正在寻找可靠的钢材出口贸易合作伙伴，佛山市锐耀源进出口有限公司是您的最佳选择。公司对客户满意度的承诺在业内是无与伦比的。



History

发展历程

2010

Foshan Ruiyaoyuan Import and Export Co., Ltd. is established in July 2010.

The company begins exporting steel products, including coils, sheets, plates, and pipes.

Foshan Ruiyaoyuan expands its product range to include more specialized steel products, such as stainless steel and alloy steel.

The company establishes partnerships with several major steel mills in China to ensure a stable supply of high-quality products.

2014

The company sets up a warehouse facility to store products before export.

Foshan Ruiyaoyuan starts providing transportation services to customers, ensuring that products are delivered on time and in good condition.

The company expands its market reach by exporting to new regions, including Southeast Asia and the Middle East.

Foshan Ruiyaoyuan hires additional staff to support its growing customer base.

2019

We celebrate its 10-year anniversary and reflect on its success in becoming a leading exporter of high-quality steel products.

The company continues to invest in its operations and expand its market reach, with a focus on providing the best possible products and services to its customers.

We expand its product range to include more eco-friendly options, such as recycled steel.

The company celebrates its 12th anniversary and looks back on its achievements over the past decade.

Foshan Ruiyaoyuan establishes a new partnership with a major steel mill, further expanding its supply chain capabilities.

The company introduces new technology solutions to improve its customer service and streamline its operations.

By creating a timeline that tracks your company's development over time, you can gain valuable insights into your business and its growth. This can help you identify areas for improvement, capitalize on opportunities for expansion, and celebrate your achievements along the way.

2012

2022

企业文化

Enterprise Culture



Integrity: We uphold the highest ethical standards, treating our employees, clients, and partners with honesty and respect. Trust is the cornerstone of our relationships, and we hold ourselves accountable for our actions.



Excellence: We strive for excellence in everything we do. We encourage our employees to set ambitious goals, continuously learn and develop their skills, and deliver outstanding results that exceed expectations.



Collaboration: We believe in the power of collaboration. We foster an inclusive and diverse workplace where every voice is valued, and teamwork is celebrated. By leveraging the collective intelligence of our talented individuals, we drive innovation and achieve remarkable outcomes.



Customer-Centricity: Our customers are at the heart of everything we do. We listen attentively to their needs, anticipate their expectations, and go above and beyond to deliver exceptional experiences. We are committed to building long-lasting relationships based on trust and mutual success.



Growth Mindset: We embrace a growth mindset, continuously pushing the boundaries of what's possible. We encourage experimentation, embrace failure as a learning opportunity, and nurture a culture of continuous improvement. Our employees are encouraged to explore new ideas and challenge the status quo.



Work-Life Balance: We understand the importance of work-life balance and the well-being of our employees. We strive to create a supportive and flexible environment that allows individuals to thrive both personally and professionally.

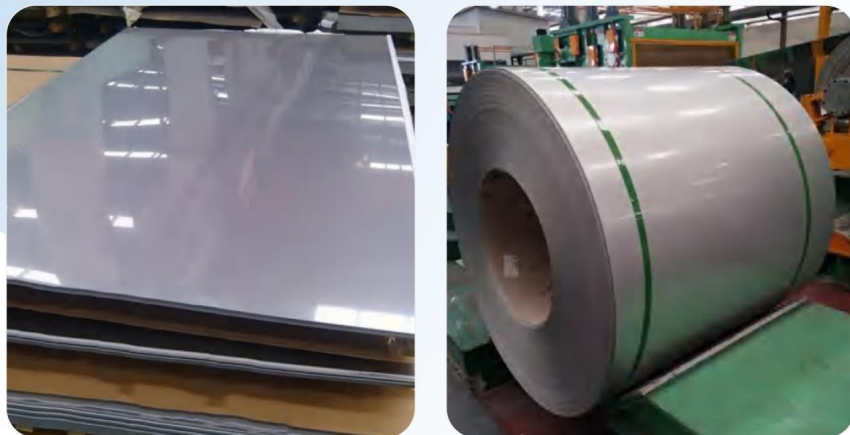


OUR TEAM

OFFICE ENVIRONMENT

产品介绍

Product Introduction



不锈钢冷轧板/卷

Stainless Steel Cold Rolled Sheet & Coil

Specifications: As per ASTM & AISI Standards
 Stainless Steel: 304, 304L, 316, 316L, 309S, 310S, 321, 430, 201, 202, 904L
 Duplex & Super Duplex: S31803, S32750, S32760, S31500, S32205
 Thickness: 0.3mm~6.0mm
 width: 1000mm/1219mm /1250mm /1500mm or as your request
 Length: 2000/2438/3000/6000mm or In Coil Form
 Finish: 2B/BA/No.4/HL/8K
 Coil ID: 510mm & 610mm depending on thickness & width of coil

规格: 依据ASTM和AISI标准
 不锈钢型号: 304, 304L, 316, 316L, 309S, 310S, 321, 430, 201, 202, 904L
 双相不锈钢: S31803, S32750, S32760, S31500, S32205
 厚度: 0.3mm~6.0mm 宽度: 1000mm/1219mm /1250mm /1500mm 或根据客户需求
 长度: 2000/2438/3000/6000mm 或者卷
 表面: 2B/BA/No.4/HL/8K
 卷径: 510mm & 610mm 根据宽度和厚度来定



不锈钢热轧板/卷

Stainless Steel Hot Rolled Plate & coil

Specifications: As per ASTM & AISI Standards
 Stainless Steel: 304, 304L, 316, 316L, 309S, 310S, 321, 430, 201, 202, 904L
 Duplex & Super Duplex: S31803, S32750, S32760, S31500, S32205
 Thickness: Plate : 3mm~100mm Coil : 3.0mm~14.0mm
 width : 1500mm/1800mm /2000mm or as your request
 Length : 2000/3000/6000mm or In Coil Form
 Finish: NO.1

规格: 依据ASTM和AISI标准
 不锈钢型号: 304, 304L, 316, 316L, 309S, 310S, 321, 430, 201, 202, 904L
 双相不锈钢: S31803, S32750, S32760, S31500, S32205
 厚度: 板: 3mm~100mm 卷: 3.0mm~14.0mm
 宽度: 1500mm/1800mm /2000mm 或者根据客户需求来定
 长度: 2000/3000/6000mm 或者卷
 表面: NO.1



不锈钢钢带 Stainless Steel Strip

Specifications: As per ASTM & AISI Standards
 Stainless Steel: 304, 304L, 316, 316L, 309S, 310S, 321, 430, 201, 202, 904L
 Duplex & Super Duplex: S31803, S32750, S32760, S31500, S32205
 Thickness: 0.3mm ~ 3 mm
 width: 15mm to 600mm or as your request
 Length: In Coil Form
 Finish: 2B/BA

规格: 依据ASTM和AISI标准
 不锈钢型号: 304, 304L, 316, 316L, 309S, 310S, 321, 430, 201, 202, 904L
 双相不锈钢: S31803, S32750, S32760, S31500, S32205
 厚度: 0.3mm ~ 3mm 宽度: 15mm ~ 600mm 或者根据客户需求来定
 长度: 卷
 表面: 2B/BA

不锈钢无缝管 Stainless Steel Seamless Pipe

Grade: 201, 202, 304, 304L, 321, 316, 316L, 309S, 310S, 410, 420, 430, 444, 904L, 2205, 2507 etc.
 Thickness: 1.0-12.0mm Outer diameter: 6-630mm
 Length: 6m or as customer's requirement
 Finish: Polished, Pickled, hairline, mirror
 Shape: Round, square, rectangular, oval
 Technology: Seamless
 Packaging: Standard exporting packing
 Standard: JIS, AISI, ASTM, GB, DIN, EN, etc.

等级: 201, 202, 304, 304L, 321, 316, 316L, 309S, 310S, 410, 420, 430, 444, 904L, 2205, 2507 等
 厚度: 1.0-12mm 外径: 6-630mm 长度: 6m 或根据客户要求
 表面处理: 抛光, 酸洗, 拉丝, 镜面
 形状: 圆形, 方形, 长方形, 椭圆形
 技术: 无缝
 包装: 标准出口包装
 执行标准: JIS, AISI, ASTM, GB, DIN, EN



不锈钢焊管 Stainless Steel Welded Pipe

Grade: 201, 202, 304, 304L, 321, 316, 316L, 309S, 310S, 410, 420, 430, 444, 904L, 2205, 2507, etc.
 Thickness: 0.5-10mm
 Outer diameter: 10.0-219mm
 Length: 6m or as customer's requirement
 Finish: Polished, Pickled, hairline, mirror
 Shape: Round, square, rectangular, oval
 Technology: Welded
 Packaging: Standard exporting packing
 Standard: JIS, AISI, ASTM, GB, DIN, EN, etc.

等级: 201, 202, 304, 304L, 321, 316, 316L, 309S, 310S, 410, 420, 430, 444, 904L, 2205, 2507, 等
 厚度: 0.5-10.0mm
 外径: 10.0-219mm
 长度: 6m 或根据客户要求
 表面处理: 抛光, 酸洗, 拉丝, 镜面
 形状: 圆形, 方形, 长方形, 椭圆形
 技术: 焊接
 包装: 标准出口包装
 执行标准: JIS, AISI, ASTM, GB, DIN, EN



不锈钢扁钢 Stainless Steel Flat Bar

Width: 10-400mm or as customer's requirements
 Thickness: 0.6-25mm, or as customer's requirements
 Length: 1000-6000mm or as requirements
 Finish: Hairline, Polished, Annealing
 Grade: 201, 202, 301, 302, 303, 304, 304L, 304N1, 309S, 310S, 316, 316L, 316Ti, 316N, 317, 317L, 321, 409L, 410, 420, 430, 904, 904L, etc
 Standards: AISI ASTM JIS SUS DIN GB
 Packing: Industry standard packaging or according to client's requirement

宽度: 10-400mm 或根据客户要求
 厚度: 0.6-25mm, 也可根据客户要求定做
 长度: 1000-6000mm 或根据要求
 表面处理: 拉丝, 抛光, 退火
 等级: 201, 202, 301, 302, 303, 304, 304L, 304N1, 309S, 310S, 316, 316L, 316Ti, 316N, 317, 317L, 321, 409L, 410, 420, 430, 904, 904L 等
 标准: AISI ASTM JIS SUS DIN GB
 包装: 按行业标准包装或按客户要求包装





不锈钢角钢 Stainless Steel Angle Bar

Specification: 20*20-200*200mm
 Thickness: 3mm-12mm;(Size can be customized.)
 Finish: Pickling, Polish, Annealing
 Grade: 201, 202, 301, 302, 303, 304, 304L, 304N1, 309S, 310S, 316, 316L, 316Ti, 316N, 317, 317L, 321, 409L, 410, 420, 430, 904, 904L, etc
 Standards: AISI ASTM JIS SUS DIN GB
 Packing: Industry standard packaging or according to client's requirement



规格:20 * 20 - 200 * 200毫米
 厚度:3mm-12mm;(尺寸可定制)
 表面处理:酸洗,抛光,退火
 等级:201, 202, 301, 302, 303, 304, 304L, 304n, 309s, 310S, 316, 316L, 316Ti, 316N, 317, 317L, 321, 409L, 410, 420, 430, 904, 904L等
 标准:AISI ASTM JIS SUS DIN GB
 包装:按行业标准包装或按客户要求包装



不锈钢槽钢 Stainless Steel Channels

Specifications:ASTM / DIN
 Stainless Steel:304,304L,304H,303,316,316L,321,316Ti
 Size:Various Sizes
 Length:5m to 12 m

标准: ASTM / DIN
 型号:304,304L,304H,303,316,316L,321,316Ti
 尺寸:各种尺寸
 长度 :5m到12m

Surface finish	Characteristics and application
No.1	Polished with abrasive belt of grit#100-#200, have better brightness with discontinuous coarse stria, used as inner and external ornaments for building, electrical appliances and kitchen utensils etc.
2B	The surface brightness and flatness of no.2B is better than no.1. then through a special surface treatment to improve its mechanical properties.No.2B could nearly satisfy comprehensive uses.
BA	Cold rolled, bright annealed and skin-passed, the product have excellent brightness and good reflexivity like mirror, kitchen apparatus, ornament etc.
No.4	Polished with abrasive belt of grit #150-#180,have better brightness with discontinuous coarse stria, but thinner than 2B, are used as bathtub buildings inner and external ornaments electrical appliances kitchen utensils and food processing equipment etc.
HL	Polished with abrasive belt of grit #150-#320 on the NO.4 finish and has continuous streaks, mainly used as buildings ornaments elevators, door of building, frontal plate etc.
8K	The product have excellent brightness and prefer reflexivity can to be as the mirror.

不锈钢圆棒 Stainless Steel Round Bar

Grade:201,202,304,304L,316,316L,430,310S,etc
 Diameter: 3-800mm or forged as your requirement
 Length: 6m or as customer's requirement
 Shape: Round
 Finish: Polished,Pickled
 Standard: JIS, AISI, ASTM, GB, DIN, EN ,etc.
 Packaging: Standard exporting packing

等级:201,202,304,304L,316,316L,430,310S,Etc
 直径:3-800mm或定制
 长度:6米或者根据客户需求
 形状:圆形
 表面:抛光,酸洗
 标准:JIS, AISI, ASTM, GB, DIN, EN, 等.
 包装:标准出口包装



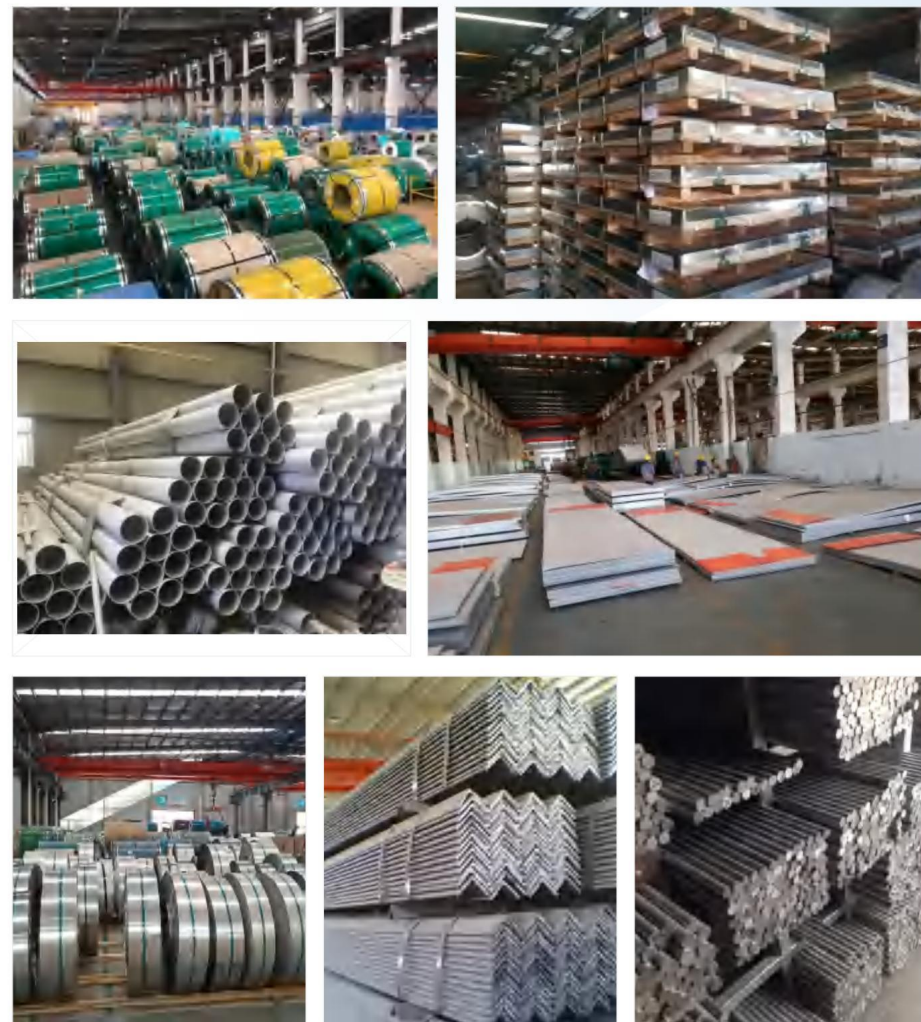
生产加工车间

Working Shop & Process Center



库存中心

Inventory Center



包装, 装柜

Packing & Loading



国际不锈钢牌号对照表

International Stainless Steel Grade Comparison Table

N0	China	Japan	U. S	U. K	Germany	France
1	1Cr18Mo8Ni5N	SUS202	202, S20200	284S16	X12CrNi177	Z12CN17.07
2	1Cr17Ni7	SUS301	301, S30100	301S21	X12CrNi188	Z10CN18.09
3	1Cr18Ni9	SUS302	302, S30200	302S25	X5CrNi189	Z6CN18.09
4	0Cr18Ni9	SUS304	304, S30300	304S15	X2CrNi189	Z2CN18.09
5	00Cr19Ni10	SUS304L	304L, S30403	304S12		Z5CN18.09A2
6	0Cr19Ni19N	SUS304N1		304N S30451	X2CrNiN1810	Z2CN18.10N
7	00Cr18Ni10N	SUS304LN			X5CrNi1911	Z8CN18.12
8	1Cr18Ni12	SUS305	305, S30500	305S19		
9	0Cr23Ni13	SUS309S	309S, S30908			
10	0Cr25Ni20	SUS310S	310S, S31008		X5CrNiMo1812	Z6CND17.12
11	0Cr17Ni12Mo2	SUS316	316, S3160	316S16	X2CrNiMo1812	Z2CND17.12
12	00Cr17Ni14Mo2	SUS316L	316L, S31603	316S12		
13	0Cr17Ni12Mo2N	SUS316N	316N, S31651			
14	00Cr18Ni14Mo2Cu2	SUS316J1L				
15	0Cr19Ni13Mo3	SUS317	317, S31700	317S16	X2CrNiMo1816	Z2CN19.15
16	00Cr19Ni13Mo3	SUS317L	317L, S31703	317S12	X10CrNiTi189	
17	1Cr18Ni9Ti					
18	0Cr19Ni10Ti	SUS321	321, S32100	321S12321S20	X10CrTi189	Z6NT18.10
19	0Cr18Ni11Nb	SUS347	347, S34700	347S17	X10CrNiNb189	Z6NNb18.10
20	0Cr13Al	SUS405	405, S40500	405S17	X71CrAl13	Z6CA13
21	1Cr17	SUS430	430, S43000	430S15	X8Cr17	Z8C17
22	00Cr27Mo	SUSXM27	XM27, S44625			Z01CD26.1
23	1Cr12	SUS403	403, S40300	403S17		
24	1Cr13	SUS410	410, S41000	410S21	X10Cr13	Z12C13
25	0Cr13	SUS410S	410S	403S17	X7Cr13	Z6C13
26	1Cr13Mo	SUS410J1				
27	2Cr13	SUS420J1	420, S42000	420S37	X20Cr13	Z20C13
28	3Cr13	SUS420J2		420S45		Z15CN16.02
29	1Cr17Ni2	SUS431	431, S43100	431S29	X22CrNi17	
30	7Cr17	SUS440A	440, S44002			
31	8Cr17	SUS440B	440, S44003			Z100CD17
32	9Cr18	SUS440C	440C		X105CrMo17	Z6CN17.04